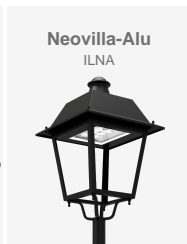


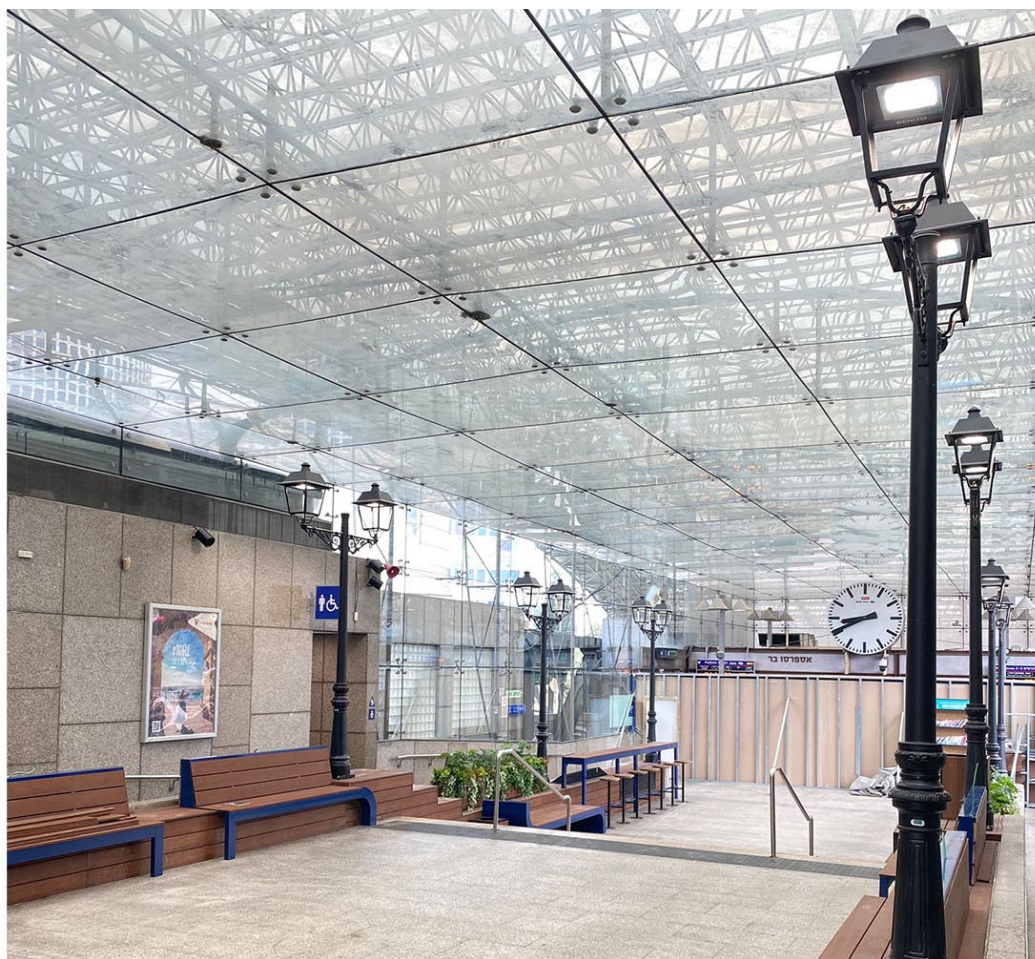
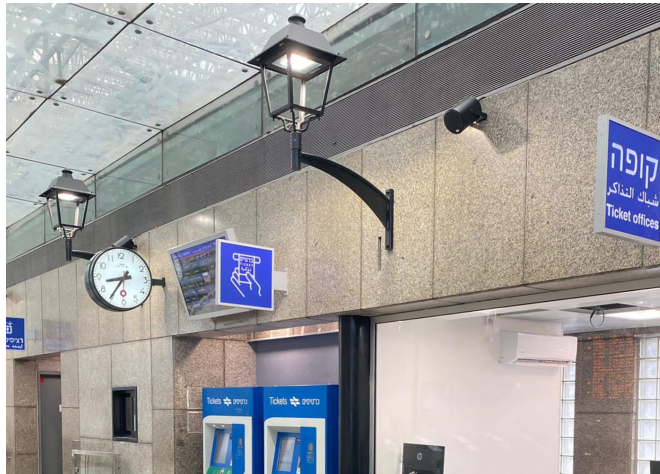
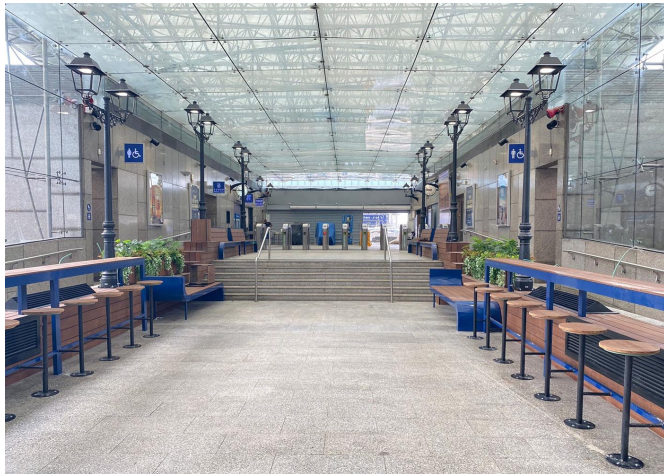
Neovilla-Alu light fixtures in one of the busiest railway stations in Israel, Tel Aviv-Hashalom



Israel is committed to replacing its entire lighting system with LED models. One of their latest developments was to install the Neovilla-Alu model at one of the busiest railway stations in Tel-Aviv.

This is a set of dual lamps, some of which are attached to the wall with an arm, matching the style of the building.





V. | The constant improvement and evolution of our products may result in some modifications of the technical specifications and characteristics of the products without prior notice.