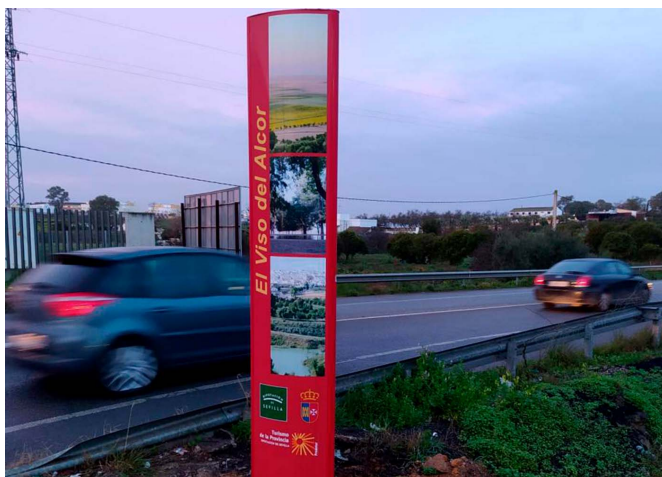




Tourist signage is important for getting to know each town or city. In different towns in the province of Seville, totems have been installed in each of them as a welcome and general information point with a map. The welcome monolith with pictures of the place and its name is located at the entrances to the town. The centrally located information point also contains a map and a bit of history.

Some 350 totems decorated with vinyl have been installed in around 100 towns in the province.

The constant improvement and evolution of our products may result in some modifications of the technical specifications and characteristics of the products without prior notice.



BENITO

info@benito.com
tel. 93 852 1000