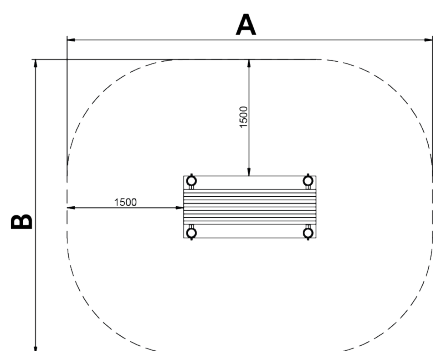
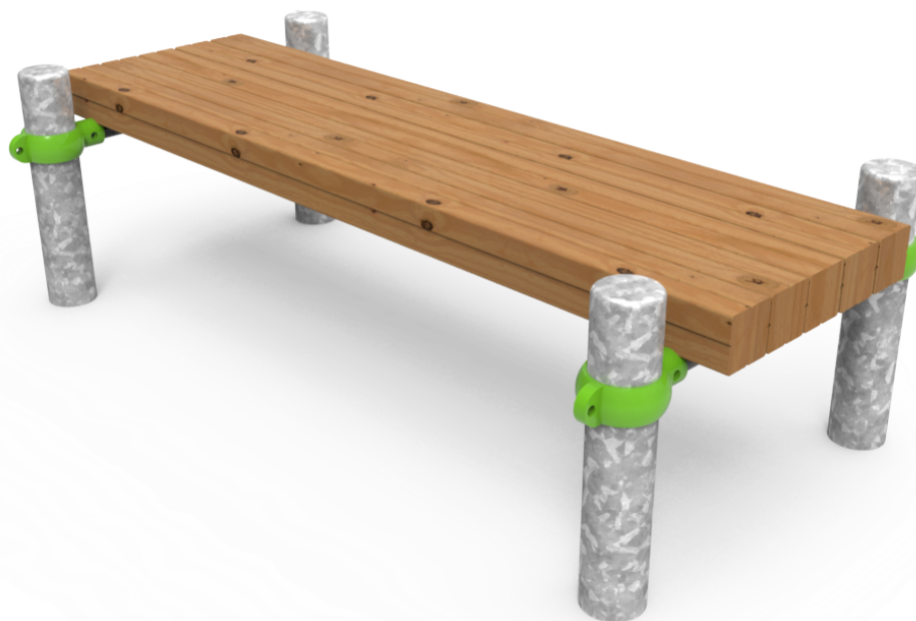


14+



Certified
EN16630
product



Street Workout elements made of metallic materials with circular profile posts and painted aluminum flanges to guarantee professional performance and product adaptability. Composed by a wide range of combinable equipment such as Wall Bars, Parallel Bars, Monkey, Snake, Abdominal, Pull-ups, Push-ups and Double level. Sports practice consists of using public outdoor spaces for free aerobic, cardiovascular, strength, muscle and/or flexibility personal training.



A=4700mm



19m2



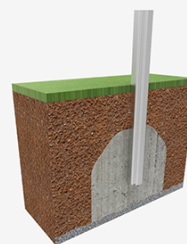
0.50m



1

B=3800mm

SB



Materials:

Structure, Metal: Ø100x3mm hot-dip galvanised steel posts. Great resistance to abrasion, corrosion and bad weather conditions.

Bars, Metal: Ø40x3mm galvanised steel bars lacquered with polyester powder coating.

Exercise Surface, Laminated wood: scandinavian laminated pine wood treated in autoclave Class IV. Finished with two layers of Lasur paint. In case of being subjected to bad weather conditions, laminated pine wood can present some tiny cracks on the surface that do not reduce its durability at all. As regards resin and knots, please note that these are part of its natural appearance.

Clamps, Metal: Cast aluminum clamps. Finished with green polyester powder coating.

Screws: Electro galvanised and stainless steel 8.8 DIN267, AISI-304 screws.

- None of the materials requires a specific treatment for its disposal.
- If the product is subject to severe use, maintenance should be increased.
- Don't use the product before the installation/maintenance is ready.
- Please check the maintenance instructions.

Biggest part (mm): / Heaviest part (kg):

Minimum information required in the signs according to EN16630:2015 standard

In the **FITNESS AREA**, there must be an information sign (pictogram, graphic symbol) including the following information:

- Equipment for young or adult users measuring more than 1.40m
 - Read and follow the instructions contained in the signs
 - Before using the equipment, users need to take into account their own aptitudes from a medical point of view
 - Excessive efforts must be avoided while using the equipment
 - Emergency telephone number
 - System or method to contact with the maintenance staff (telephone, email, web)
 - Address or GPS location of the playground area
 - Instructions on the exercises with the corresponding pictograms
- Main functions of the equipment

IMPACT ZONE: security area and ground coverings according to the EN1176-1:2017 standard.

Spare parts availability: 10 years.

Ground anchoring screws not included.

Playful features:



Alternatives:

